

ROLL CRUSHERS

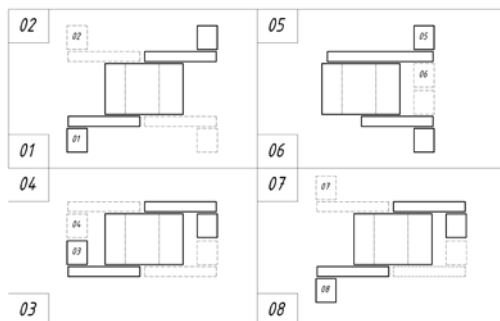
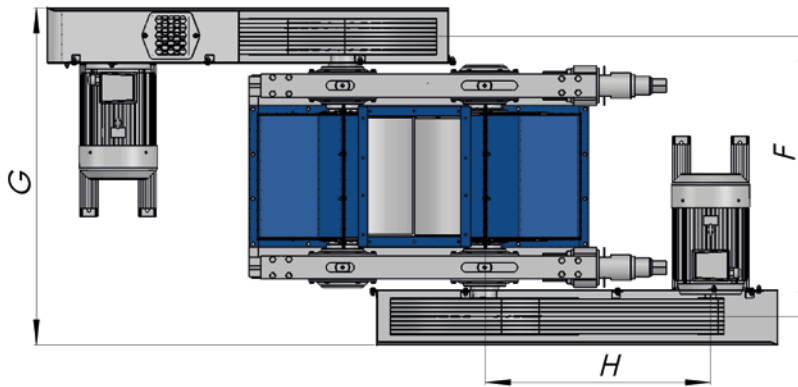
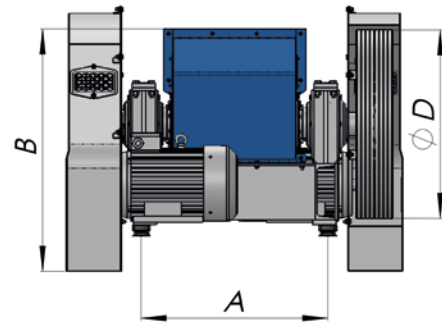
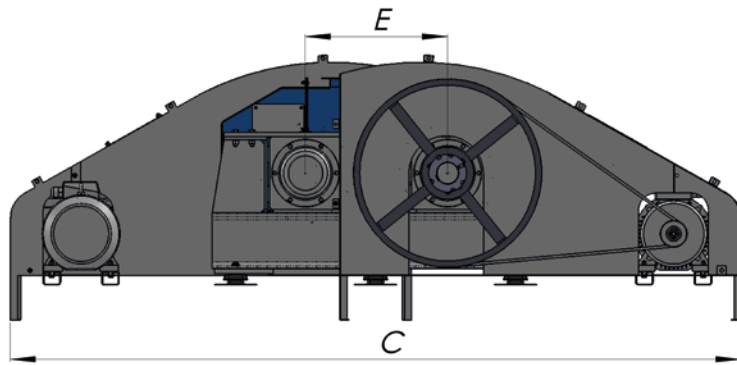
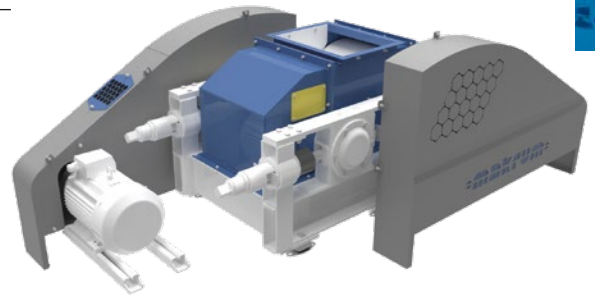
RC series

Designed for fine crushing of initially crushed materials with medium and low hardness, such as sintered zinc, limestone, marlstone, sandstone, cake, salt, and coal.

Roll crusher consists of a welded frame and rolls mounted on a slide bearing. One of the rolls is mounted in a fixed housing, the other one in a movable housing which allows the adjustment of the output slot.

The rolls are powered independently by two electric motors and are enclosed in a casing that is equipped with a material input slot.

The catalogue sheet presents selected types of crushers from a wide range of products offered by MAKRUM.



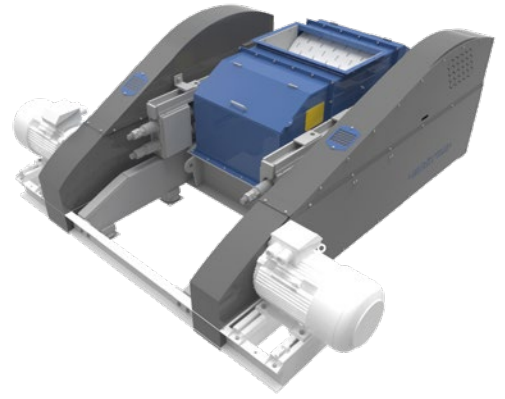
engine position configurations

dimensions/type	RC 40.49	RC 40.59	RC 40.63	RC 40.68	RC 40.71
A	3030	650	1400	800	800
B	2060	1216	1300	830	830
C	7850	4110	5090	3210	3300
D	1550	1000	1030	610	610
E	3820	1165	1960	1210	1200
F	4720	1360	2260	1470	1460
G	2400	1400	1485	980	980

dimensions in mm

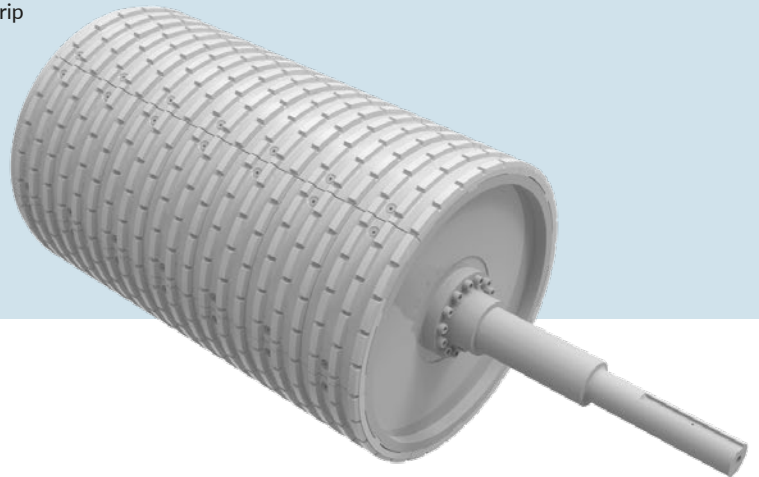
ROLL CRUSHERS

RC series

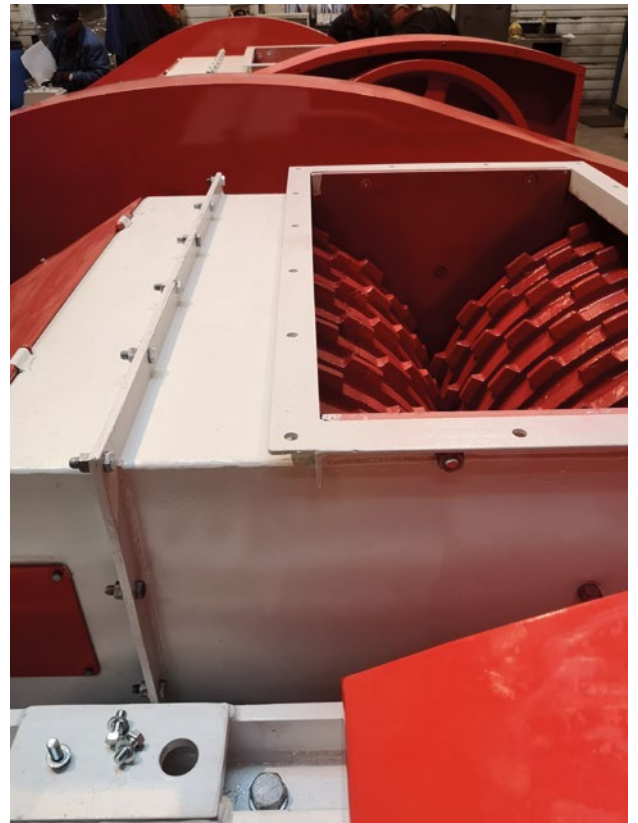
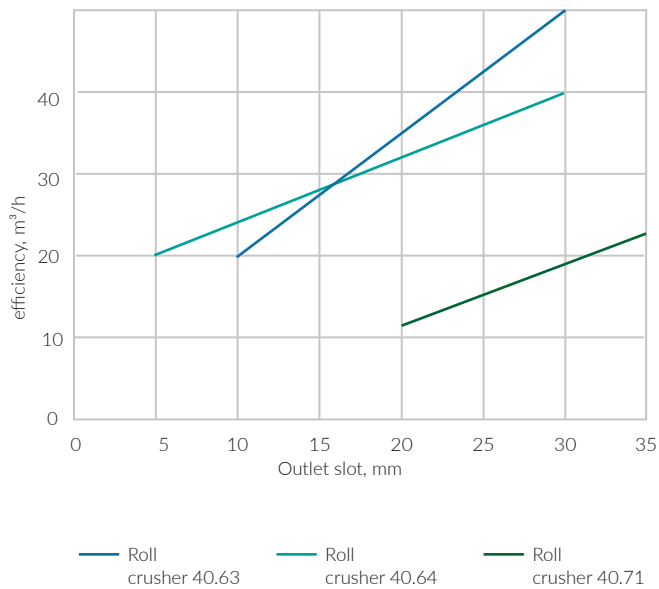


OUR ADVANTAGES AND SOLUTIONS

- selection of the optimal shape of roll linings depending on customers' needs
- convenient system of mechanical adjustment of the slot and grip or dynamical control of feed material in the hydraulic system
- scrapers made of modern materials making no damage to work surfaces
- available with a belt drive or gear motor
- labyrinth and lip seals of bearings
- easily removable housings



Theoretical capacity of roller crushers as a function of the exit slot



ROLL CRUSHERS

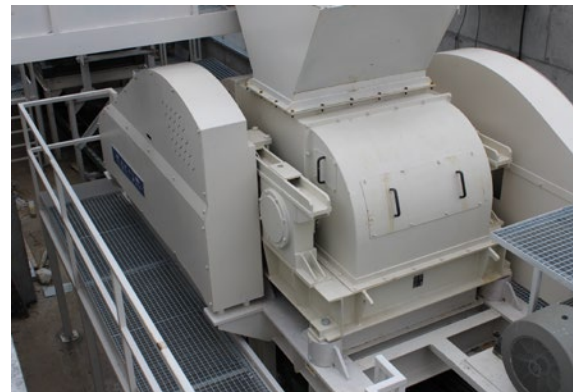
RC series

TECHNICAL CHARACTERISTICS

dimensions / type		RC 40.46	RC 40.50	RC 40.51	RC 40.59 typical design	RC 40.59 special design	RC 40.63	RC 40.64	RC 40.65	RC 40.66	RC 40.68	RC 40.71	
Nominal capacity	m ³ /h	800	250	55-165	3-15	15-25	20-60	20-40	142-185	90-125	10-60	10-22	
Roller diameter	mm	1500	2000	1800	1000	1000	1000	1000	1500	1500	600	600	
Length of the rolls	mm	2000	1800	1800	350	350	1000	1000	1500	1500	500	500	
Type of rollers	-	geared	geared	smooth	smooth	smooth	geared	smooth	geared	smooth	smooth	geared	
Adjustment range the outlet slot	mm	40-150	230-330	15-130	2-10	12-25	0-40	0-40	30-100	30-80	3-15	20-40	
The biggest size lumps of the feed	mm	300	600-800	250	10-45	50-80	250	250	250	250	60	150	
Engine power driving	kW	2x95	2x90	2x100	2x15	2x22	2x37	2x37	2x52	2x55	2x11	2x11	
Dimensions (without drive):													
	- length	mm	4100	5150	5150	3360	3360	3800	5000	4100	4100	1770	2560
	- width	mm	4200	5250	5250	1364	1364	4000	4000	3520	3640	1300	1480
- height	mm	2200	3020	3020	1216	1216	2200	1500	2325	2320	830	930	
The mass of the biggest team	kg	12830	25550	25000	2500	2500	3700	3700	10500	11300	800	700	
Total weight	kg	35800/36600	73500/77268	72900	5450/7500	5400/7600	8700/12100	8900/12100	27200/30900	27690/32500	2400/2820	2300/2330	

each time crusher parameters must be agreed on with the manufacturer

type	intended use
RC 40.49	brown coal
RC 40.59	in typical design: initially crushed materials (basalt, granite etc.) in special design: for gravel mix crushing
RC 40.63	medium and low hardness materials, such as limestone, marlstone, coal, shale, plaster etc.
RC 40.68	medium and low hardness materials, such as limestone, brick, chalk, burnt lime, plaster, sulphur ore, salt etc.
RC 40.71	medium and low hardness materials, such as limestone, brick, chalk, burnt lime, plaster, sulphur ore, salt etc.



Theoretical capacity of Roll crushers 40.68 as a function of the exit slot

